



SANTHEM
RESIDENCES



Apartment 32

Santhem Residences Shenfield
Rayleigh Close, Shenfield, Essex CM13 1FD

£625,000

Other charges apply.

PROPERTY DETAILS AND FEATURES

This exceptional two-bedroom apartment is located on the second floor with easy lift access. Flowing beautifully from the moment you open the walnut front door, the attention to detail in the design and décor is immediately evident. Amtico flooring in the hallway and kitchen is both practical and impressive. The master bedroom benefits from an en suite with easily accessible bathroom fittings and sanitaryware from Villeroy & Boch. Both bedrooms and the spacious open plan living area enjoy east-facing views, letting in plenty light.

(The apartments are sold unfurnished)

APARTMENT 32

KITCHEN

- Fully fitted Hacker kitchen
- Neff oven, induction hob and microwave
- Integrated Electrolux fridge/freezer and dishwasher
- Glass splashback

BATHROOM & EN SUITE

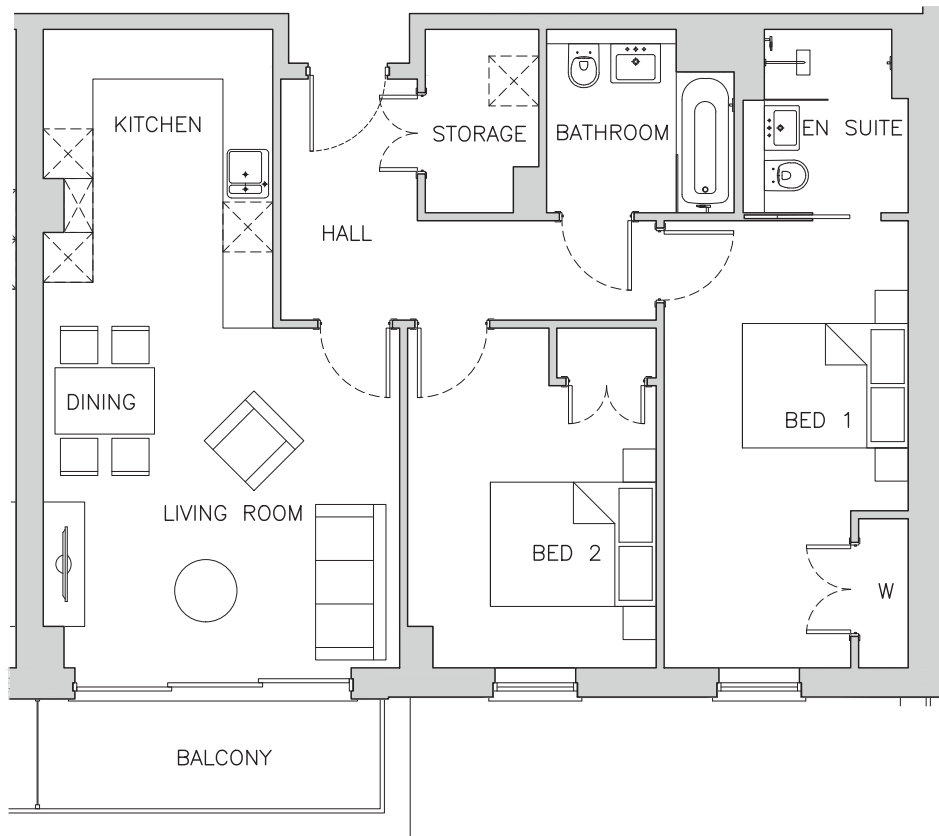
- Bathroom features bath, basin and WC with Villeroy & Boch fittings
- En suite with walk-in shower, basin and WC with Villeroy & Boch fittings
- Overhead shower head and arm
- Chrome electric towel radiator
- Heated mirror fixed to wall above wash basin

ELECTRICAL AND HEATING

- Downlighters and light fittings throughout
- Laundry cupboard complete with Bosch washing machine and tumble dryer
- Underfloor heating
- Telephone and aerial points throughout

FLOORING AND FINISHES

- Amtico wooden floor to hallway and kitchen
- Tiled floors to bathroom and en suite
- Carpet to bedrooms and lounge/dining area
- Walnut front door
- Rooms painted neutral colours
- Polished chrome sockets and switches
- Fitted wardrobes in bedrooms
- Private outdoor space in the form of a balcony



Room Name	Metric (m)	Imperial (ft & inches)
Living/Dining	4.1m x 4.3m	13'5" x 14'1"
Kitchen	3.6m x 2.8m	11'10" x 9'1"
Storage	2.2m x 1.4m	7'3" x 4'6"
Bedroom 1	5.4m x 2.9m	17'8" x 9'8"
Wardrobe 1	1.8m x 0.6m	5'11" x 2'0"

Room Name	Metric (m)	Imperial (ft & inches)
En suite	2.2m x 2.0m	7'3" x 6'6"
Bedroom 2	4.1m x 3.0m	13'5" x 9'10"
Wardrobe 2	0.6m x 1.2m	2'0" x 3'11"
Bathroom	2.2m x 2.2m	7'3" x 7'2"
Total Area	78.7m²	846.81ft²

Say Yes! to exceptional retirement living in Essex.

enquiries@santhemresidences.co.uk | Tel: 01277 508999