



SANTHEM
RESIDENCES



Penthouse Apartment 52

Santhem Residences Shenfield
Rayleigh Close, Shenfield, Essex CM13 1FD

£845,000

Other charges apply.

PROPERTY DETAILS AND FEATURES

The attention to detail and impressive features in this stunning two-bedroom apartment are second to none. Situated on the third floor, with easy lift access, this apartment boasts two Juliet balconies, one accessed from the main open plan living area and one from the spacious master bedroom. With high quality appliances, fixtures and fittings throughout, this apartment offers a luxurious yet comfortable feel. Exceptional technology has been added to enhance enjoyment, safety and security with a built-in Sonos music system to the lounge and dining area, video entry and CCTV to the car park and entrance.

(The apartments are sold unfurnished)

PENTHOUSE APARTMENT 52

KITCHEN

- Fully fitted Hacker kitchen
- Miele oven, induction hob and microwave
- Integrated Bosch fridge/freezer and dishwasher
- Glass splashback

BATHROOM & EN SUITE

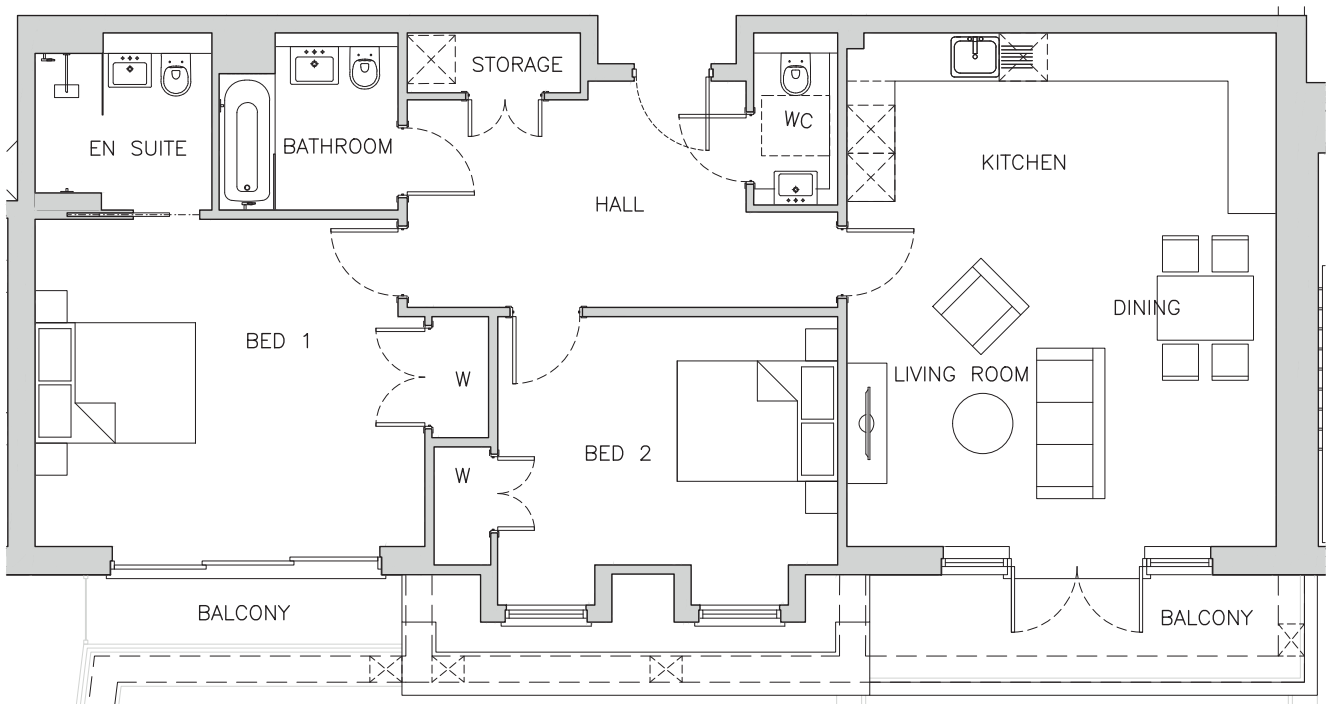
- Bathroom features bath, basin and WC with Villeroy & Boch fittings
- En suite with walk-in shower, basin and WC with Villeroy & Boch fittings
- Overhead shower head and arm
- Chrome electric towel radiator
- Heated mirror fixed to wall above wash basin
- Additional WC

ELECTRICAL AND HEATING

- Downlighters and light fittings throughout
- Laundry cupboard complete with Bosch washing machine and tumble dryer
- Underfloor heating
- Telephone and aerial points throughout

FLOORING AND FINISHES

- Amtico wooden floor to hallway and kitchen
- Tiled floors to bathroom, en suite & WC
- Carpet to bedrooms and lounge/dining area
- Walnut front door
- Rooms painted neutral colours
- Antique bronze sockets and switches
- Fitted wardrobes in bedrooms
- Private outdoor space in the form of two Juliet balconies



Room Name	Metric (m)	Imperial (ft & inches)
Living/Dining	5.4m x 4.3m	17'7" x 14'1"
Kitchen	5.4m x 2.1m	17'7" x 6'11"
Storage	2.2m x 0.7m	7'1" x 2'5"
WC	1.0m x 2.1m	3'5" x 7'0"
Bedroom 1	4.9m x 4.1m	15'11" x 13'5"

Room Name	Metric (m)	Imperial (ft & inches)
Wardrobe 1	0.7m x 1.5m	2'4" x 4'11"
En suite	2.2m x 2.2m	7'3" x 7'3"
Bedroom 2	4.2m x 3.1m	13'11" x 10'2"
Wardrobe 2	0.7m x 1.5m	2'4" x 4'10"
Bathroom	2.2m x 2.2m	7'4" x 7'3"
Total Area	100.1m²	1077.08ft²