



SANTHEM
RESIDENCES



Apartment 26

Santhem Residences Shenfield
Rayleigh Close, Shenfield, Essex CM13 1FD

£625,000

Other charges apply.

PROPERTY DETAILS AND FEATURES

This truly luxurious two-bedroom apartment is striking in both its design and finish. Making the most of its west-facing aspect, both bedrooms and the main living area and balcony can enjoy sunset views. This apartment is incredibly spacious, with well-proportioned rooms and ample storage. Comfort and safety have been considered throughout with features such as easily accessible bathroom fittings, higher level polished chrome sockets, a video entry system and CCTV to the car park and entrance.

(The apartments are sold unfurnished)

APARTMENT 26

KITCHEN

- Fully fitted Hacker kitchen
- Neff oven, induction hob and microwave
- Integrated Electrolux fridge/freezer and dishwasher
- Glass splashback

BATHROOM & EN SUITE

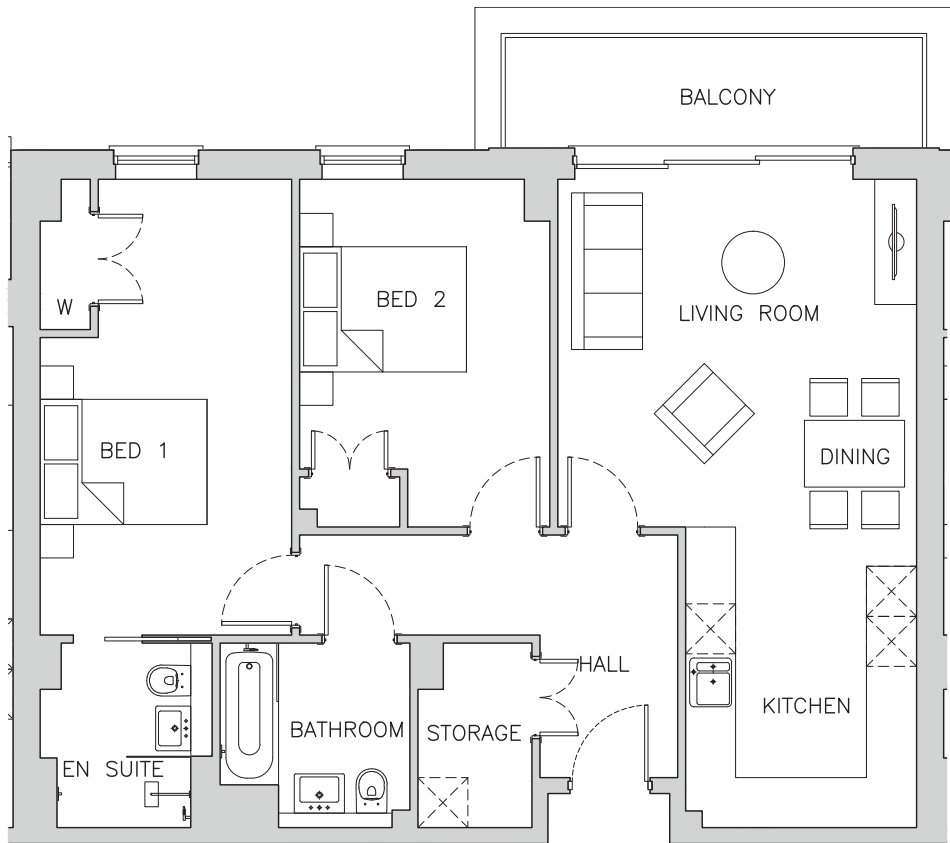
- Bathroom features bath, basin and WC with Villeroy & Boch fittings
- En suite with walk-in shower, basin and WC with Villeroy & Boch fittings
- Overhead shower head and arm
- Chrome electric towel radiator
- Heated mirror fixed to wall above wash basin

ELECTRICAL AND HEATING

- Downlighters and light fittings throughout
- Laundry cupboard complete with Bosch washing machine and tumble dryer
- Underfloor heating
- Telephone and aerial points throughout

FLOORING AND FINISHES

- Amtico wooden floor to hallway and kitchen
- Tiled floors to bathroom and en suite
- Carpet to bedrooms and lounge/dining area
- Walnut front door
- Rooms painted neutral colours
- Polished chrome sockets and switches
- Fitted wardrobes in bedrooms
- Private outdoor space in the form of a balcony



Room Name	Metric (m)	Imperial (ft & inches)
Living/Dining	4.2m x 4.3m	13'8" x 14'1"
Kitchen	3.6m x 2.8m	11'10" x 9'1"
Storage	2.2m x 1.4m	7'3" x 4'6"
Bedroom 1	5.5m x 3.0m	17'11" x 9'11"
Wardrobe 1	1.8m x 0.6m	5'11" x 2'0"

Room Name	Metric (m)	Imperial (ft & inches)
En suite	2.2m x 2.1m	7'3" x 6'9"
Bedroom 2	4.2m x 3.0m	13'8" x 9'10"
Wardrobe 2	0.6m x 1.2m	2'0" x 3'11"
Bathroom	2.2m x 2.3m	7'3" x 7'6"
Total Area	80.0m²	860.80ft²